

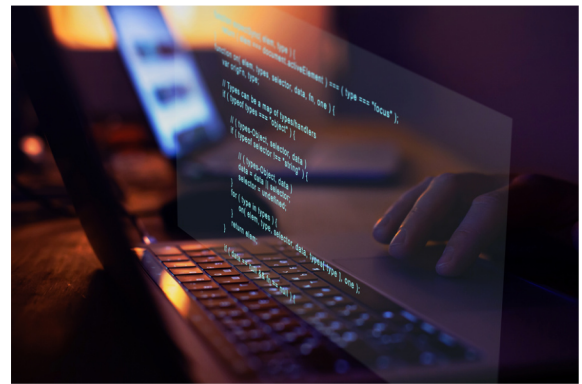
CSP Syslog Receiver

The new CSP Syslog Receiver for Nonstop servers is an OSS Gateway tool that receives syslog messages from multiple sources such as Hardware Security Modules (via TCP/IP or UDP) and Enterprise Key Managers, and forwards them to EMS collectors.

This solution delivers improved insight and visibility into the Hardware Security Module (HSM), facilitating more effective management and troubleshooting.

Get a live view and detailed insights into the HSM status during upgrades. Having the Syslog receiver running during an HSM upgrade gives a much better view of any upgrade issues or failures when they happen, as compared to HSM log files that are not really visible in real time.

Installation and setup are very quick, and the product is simple to use.

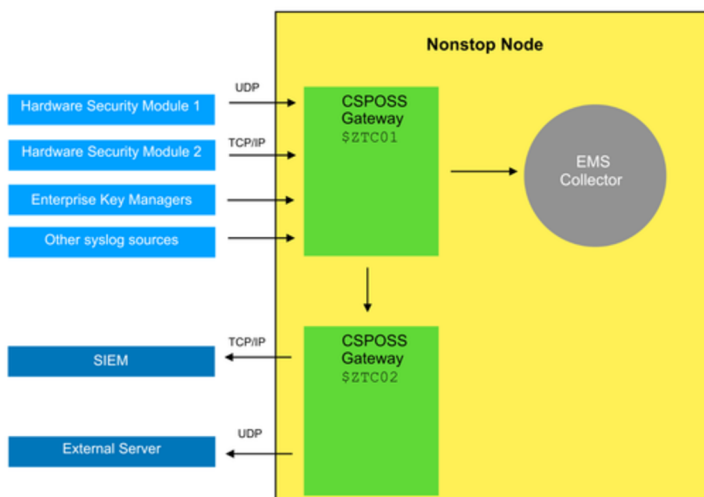


Key Features

- OSS process managed by config file (YAML format)
- Supports TCP/IP and UDP protocols
- Supports multiple syslog sources
- Support for Enterprise Security Key Managers
- Ability to specify a dedicated EMS collector for Syslog messages
- Ability to run as a Pathway process
- Quick installation and setup
- Simple to use
- No GUI to install
- Forward syslog messages to a SIEM (e.g. Splunk)

Benefits

- Improves insight into the Hardware Security Modules and Enterprise Key Managers
- Increases visibility and awareness of devices connected to the Nonstop environment
- Real-time insights into HSM software update process and status
- Receive critical messages regarding hardware failure/power failure



Supports Multiple Syslog Sources

In addition to Hardware Security Modules, messages from various other syslog sources can be sent to EMS, providing increased visibility and awareness of the devices connected to the Nonstop environment. CSP Syslog Receiver now also supports Enterprise Security Key Managers (ESKM's).

If required, syslog messages can also be forwarded to external systems such as SIEM devices (e.g. Splunk) This feature can be used together with or instead of EMS logging.

